



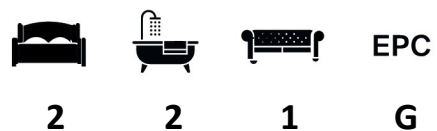
Kidderpore Avenue, Hampstead NW3 7SJ

**WAYNE
& SILVER**

Kidderpore Avenue, Hampstead NW3 7SJ

A spacious first floor apartment offering two double bedrooms and an allocated underground parking space, set within an exclusive portered development in Hampstead. The property features a generous reception room, a well-appointed fitted kitchen, a principal bedroom with an en suite shower room, a second double bedroom, and a separate family bathroom.

Westfield is a highly sought after contemporary development that provides exceptional resident facilities, including an indoor swimming pool, gymnasium, extensive communal gardens, 24-hour uniformed portorage, lift access, and secure underground parking.



Guide price: £3,012 Per Month

Tenure:

Service Charge: Add text here

Local Authority:

Council Tax Band:

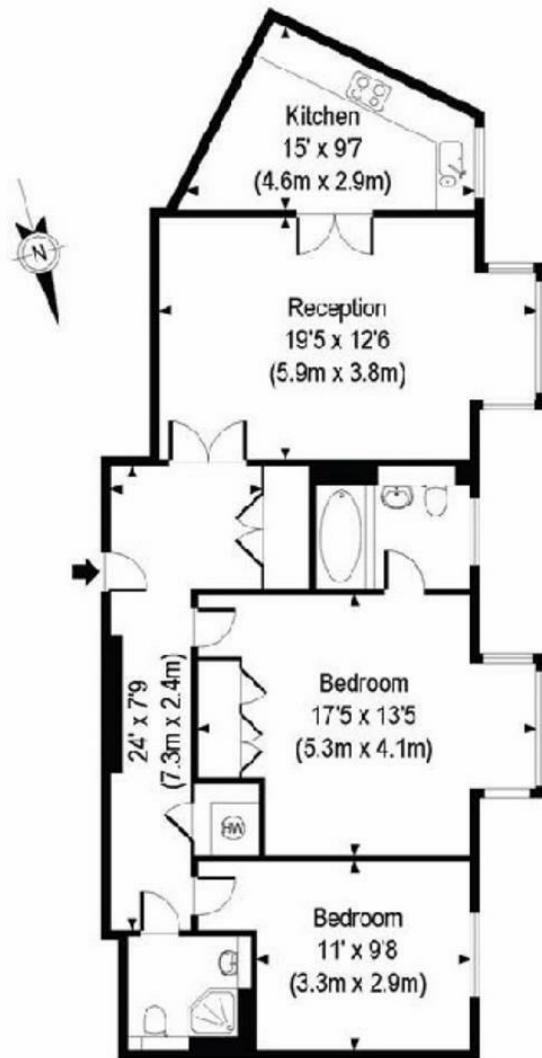








Approximate gross internal area 906 sq ft - 84 sq m



First Floor

41 Heath Street
Hampstead
London
NW3 6UA

We would be delighted to tell you more
020 7431 4488
info@wayne-silver.com

wayne-silver.com

Important Notice: Wayne & Silver, its clients and any joint agents give notice that 1: They are not authorised to make or give any representations or warranties in relation to the property either here or elsewhere, either on their own behalf or on behalf of their client or otherwise. They assume no responsibility for any statement that may be made in these particulars. These particulars do not form part of any offer or contract and must not be relied upon as statements or representations of fact. 2: Any areas, measurements or distances are approximate. The text, photographs and plans are for guidance only and are not necessarily comprehensive. It should not be assumed that the property has all necessary planning, building regulation or other consents and Wayne & Silver have not tested any services, equipment or facilities. Purchasers must satisfy themselves by inspection or otherwise.